

# A proposed reservoir in Lincolnshire

Phase One Consultation  
Feedback Summary





# Contents

|   |   |
|---|---|
| <a href="#">Introduction</a>                        | 1 |
| <a href="#">About us</a>                            | 2 |
| <a href="#">Why we need a reservoir</a>             | 2 |
| <a href="#">Consultation overview</a>               | 3 |
| <a href="#">Your feedback on the concept design</a> | 4 |
| <a href="#">What you told us</a>                    | 5 |
| <a href="#">Next steps</a>                          | 8 |
| <a href="#">Contact us</a>                          | 9 |

# Introduction

## Anglian Water is proposing a new reservoir in Lincolnshire that will secure water supply to our customers for future generations.



The new reservoir will store more water so it's always on tap when we need it, helping to meet the challenges of a changing climate and a growing population.

It will mean less water is taken from sensitive sources, such as chalk streams, helping us to protect and restore the environment.

The reservoir will help to protect supplies for decades to come and contribute to our long-term goals of ensuring the East of England is resilient to the risks of drought and flooding.

Our vision for the project goes beyond just building a reservoir. We want to create a place where water, people and nature come together. This means creating space for wildlife, such as wetlands, alongside economic and social opportunities like recreation and educational activities.

We were pleased to share our early proposals for the reservoir with communities and stakeholders in our first consultation in autumn 2022, and we would like to say thank you to everyone that provided feedback.

It was great to talk to local people and stakeholders to understand their thoughts and comments. It is clear they saw great value in the environmental and recreational benefits the reservoir could bring to the region.

At the same time, people have shared their concerns about the reservoir across a wide range of topics including: effects on the environment and local communities, visual impacts, the suitability of local roads to take more traffic, and the possibility of disruption during construction.

The local community also want to know what this will mean for the people whose homes, land or business may be affected by our plans.

The project is at an early stage. We understand the effect on those impacted by our proposals including homeowners, landowners and the nearby community. We're committed to working with everyone as the project develops and want to hear all views on our emerging proposals.

The information we've gathered to date is really valuable to us and we've learned a lot from the consultation.

This summary shares the wide range of feedback we received and explains how we are using this feedback to inform the ongoing design of the reservoir.

# About us

## Anglian Water

Anglian Water supplies water and waste water services to almost seven million customers in the East of England and Hartlepool. We employ around 5,000 people in the region.

As a purpose-led business, we recognise we have a huge opportunity – and responsibility – to contribute to the environmental and social wellbeing of the communities we serve.

As one of the largest energy users in the East of England, we're also committed to becoming a net zero carbon business by 2030.

Anglian Water is investing heavily today to help prepare for tomorrow. We continue to lead the water sector in tackling leakage, exceeding our regulatory targets in excess of 10 years running.

Work is already underway on a half-billion-pound investment to lay hundreds of kilometres of new, interconnecting pipes to bring water from the wettest areas in the north of Lincolnshire to the drier areas in the south and east of the region. We're also installing over one million smart meters in customer homes, and delivering a multitude of abstraction reduction programmes, protecting precious chalk streams and rivers.

# Why we need a new reservoir

## Making sure we continue to have a reliable supply of water takes careful planning and co-ordination.

Anglian Water has developed a Water Resources Management Plan setting out our plans and investments – such as improving efficiency; addressing leakage; restoring the environment; and building new water resources.

Our current plan was published in draft in December, while the first consultation on the reservoir was taking place. This sets out what we need to do from 2025 to 2050.

This plan identified new reservoirs as a crucial solution to meet

the growing demands on water supplies in the East of England.

As a region we face challenges that will affect how we supply and use water in the future. The new reservoir will help us meet these demands by making the most of the available resources and provide water to local communities and businesses across our region, including in Lincolnshire.

Reservoirs provide a level of resilience, volume of water, and environmental opportunities that are not provided by other resource options such as desalination or water reuse. They take excess river water in winter, when flows are at their highest, and store it for use in dry summers, when water is more scarce. This enables us to make the most of wet weather to then service periods of dry weather. It also reduces the reliance on ground water sources,



which in turn enables ground water recovery, such as to chalk streams.

It's planned to be in supply by the early 2040s and will provide up to 166 million litres of water per day – enough for approximately 500,000 homes.



**Our region is unique, low-lying and one of the driest in the UK:**



**A 1/3 less rainfall than the UK average**

**We need to protect supplies in the face of climate change.**

**Our region is one of the fastest growing in the country:**



**175,000 new homes**

**in the next five years**



**20% population growth by 2050**

**We need more water for more people.**

**Our region's precious landscapes and environment need water to ensure their survival:**



**the natural environment**

**relies on rivers and groundwater**

**We need to reduce the amount of water we take from these sources.**

**We need to protect and restore the environment.**



# Phase one consultation – an overview

The purpose of the phase one consultation was to gather feedback and information on our early proposals to inform ongoing design development.

During our consultation, we worked closely with stakeholders and the public to discuss our proposals, answer questions and encourage their feedback.

Your local knowledge is very valuable. It helps us to further understand any potential impacts and opportunities, and what features you'd like to see included as the design for the reservoir develops.

The 10 week consultation took place between 12 October and 21 December 2022. We held a series of consultation

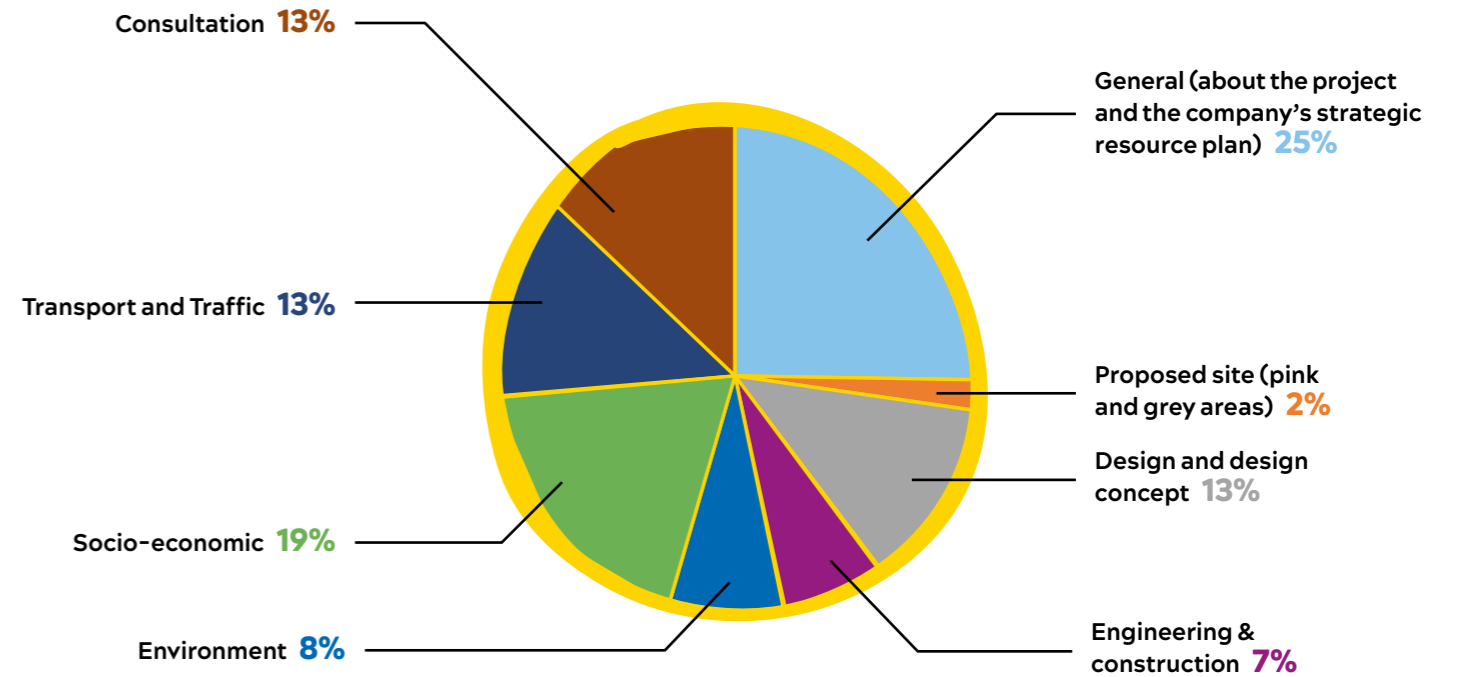
events in local villages, as well as webinars, all of which were well attended. It was great to meet the local community and it was a valuable way for us to hear what people had to say.

We sought your feedback on two key parts of our proposals – the area we had identified for the reservoir and an early concept design.

We also asked you if there was anything else you considered important and for your views on the way we consulted.

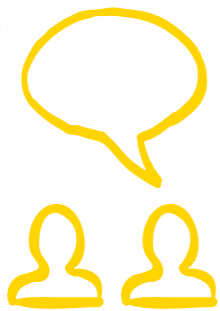
## WHAT YOU FED BACK ON

We've received really valuable feedback covering a broad range of themes and topics. The chart below shows a breakdown of the comments we received.



## HOW YOU GOT INVOLVED

Attendees to events and webinars:  
**892**  
people



Total feedback submissions:  
**330**



### INCLUDING:

**291** from individuals including local people, elected representatives and other members of the public.

**18** from organisations including local authorities, interest groups and specialist bodies.

**21** from affected parties including property owners and occupiers within the pink and grey areas.

Website visitors:  
**37,000**



“Lincolnshire County Council is committed to working with Anglian Water, wider partners and stakeholders as well as local communities to ensure that water is managed in the best possible way for people and the environment”

- Lincolnshire County Council

# Your feedback on the concept design

The project presents social and environmental opportunities and our vision goes beyond just building a reservoir.

We want to create a place where water, people and nature come together.

That means creating space for wildlife, such as wetlands, alongside enabling new recreational and educational activities and natural places for people to explore. It also means providing opportunities for local businesses and tourism.

Our very early concept design for the reservoir was part of our phase one consultation. It showed some of the potential features we hope to include in the reservoir like wildlife areas, recreation and water sports, green infrastructure like cycleways, renewable energy and others.

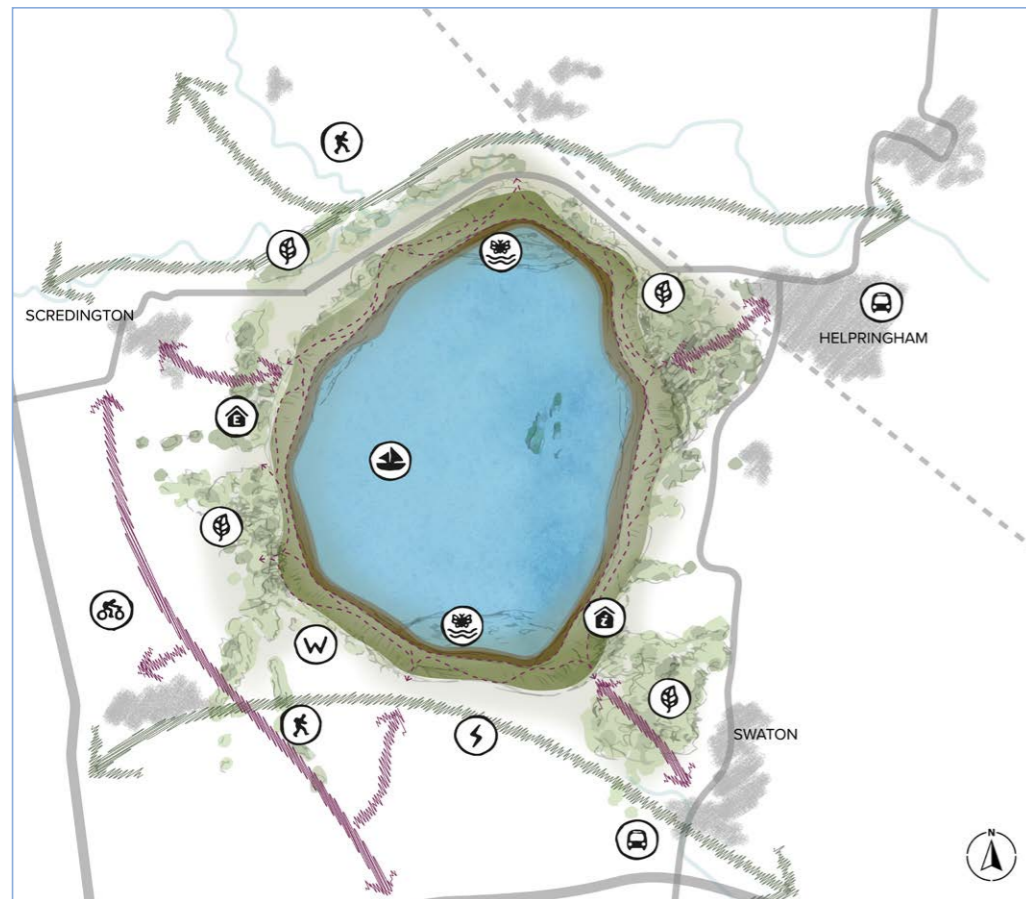
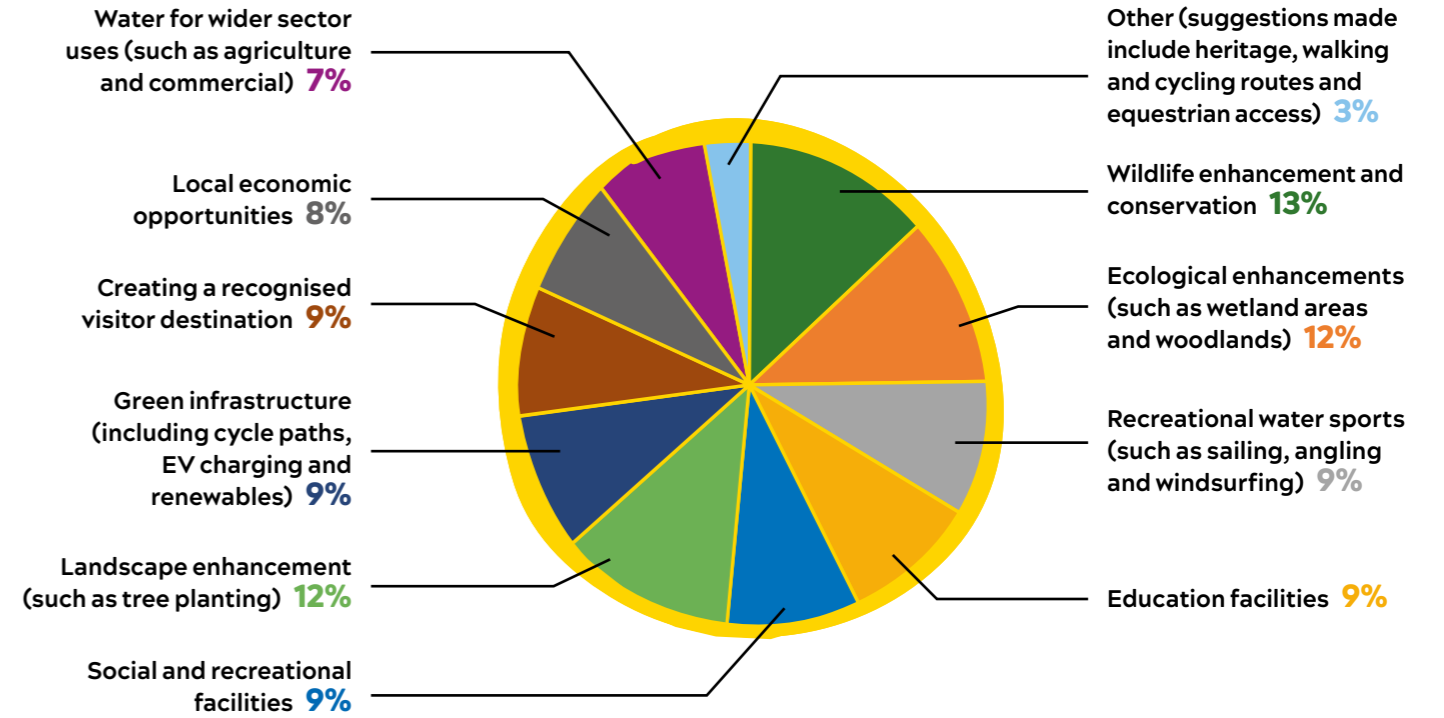
It helped stimulate thought and discussion and it was good to hear

people's thoughts and ideas around both opportunities and impacts.

It's clear people want us to carefully consider the potential impacts on people and businesses in the area, while also creating places for local communities and visitors to explore.

You also told us that design of the reservoir will be very important in helping to reduce your concerns about impacts on place and community. Visual impacts of the embankments was a key theme, and you also said we should think carefully about access to the reservoir from Scredington, Helpringham, Swaton, Spanby, and other places nearby.

## Features you'd like to see included in the reservoir



- Key:**
- Education Centre
  - Visitor Centre
  - Footpath improvements
  - New cycleway provision
  - Renewable Energy opportunities
  - Sustainable transport opportunities
  - Sailing / watersports
  - Biodiversity opportunities
  - Water treatment works
  - Wetland habitat areas within reservoir
  - Multi-use recreation routes
  - Opportunities for cycle / footpath connections
  - Opportunities for green / blue infrastructure enhancement

The concept plan shown is indicative at this stage and will develop following more detailed design and in response to consultation

## What you told us about the design

You also told us the design of the reservoir will be very important in helping to reduce your concerns about impacts on place and community. Here are your key suggestions:



**CONNECTIVITY WITH NEARBY COMMUNITIES**  
Preserving existing routes between communities and creating new ones



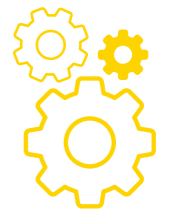
**ACCESS TO NATURE AND WATER**  
Green space and countryside that can be enjoyed by all



**VISUAL IMPACTS INCLUDING EMBANKMENTS**  
Making sure the reservoir is visually appealing and in keeping with local character



**WILDLIFE AND NATURE**  
Protecting existing habitats and wildlife alongside enhancement



**SUPPORTING LOCAL INDUSTRY**  
Working with farmers and farming organisations to explore opportunities to support agriculture



**OUTDOOR RECREATION**  
Creating new and accessible leisure and recreational facilities

# What you told us – topics important to you

Since our consultation closed, we have been analysing the feedback to better understand your concerns and what you would like to see from our proposals.

We want to thank everyone for the feedback we've received throughout the first phase of consultation.

The more feedback we receive, the more knowledge we have of the local

area, which is vital to inform our plans and design as the project progresses.

We received comments about the reservoir specifically and its potential impacts on the community, as well as

more broadly about Anglian Water such as water resource planning, addressing leakage and the need for a reservoir.

| Topic                                       | What you said   | What we're doing   |
|---|---|--|
| <b>Community and local business impacts</b> | <b>You're concerned about the potential impacts of the reservoir for those who are living or working within the project area, particularly within the agricultural community.</b> | <p>We understand the concerns you have about the impact of the reservoir on the agricultural community.</p> <p>As we continue to develop the design for the reservoir, we will be seeking to minimise any impacts on surrounding communities.</p> <p>We'll provide more information on potential impacts and opportunities at the phase two consultation, when we will share a more detailed design.</p> <p>We're continuing to work closely with those who may be affected, and have a dedicated lands team focused on those individuals and businesses.</p>  |
|   | <b>There were concerns about whether we had considered farming land when we selected the site.</b>  | <p>Quality of agricultural land and potential impacts were considered in the site selection process. Given the size of the reservoir, all of the sites we considered had the potential to affect agricultural land.</p> <p>The site we're proposing was the best performing of all the sites progressed through our site selection process – one which balances all of the factors we considered, and that also provides significant opportunities to unlock wider benefits.</p> <p>Our proposals are at an early stage. We understand the effect on those impacted by our proposals including homeowners, landowners and the nearby community. We're committed to working with everyone as the project develops and want to hear all views on our emerging proposals.</p> |

| Topic   | What you said  | What we're doing  |
|---|--|---|
| <b>Community and local business impacts</b>     | <b>You provided feedback on flooding in the area and sought assurance that the reservoir would not make flooding worse, or put the surrounding communities and properties at risk of flooding.</b> | <p>Minimising flood risk was a central part of our site selection process and will be key to the design of any new reservoir.</p> <p>Measures will be put in place to ensure the reservoir will not increase the current risk of flooding. We also believe there are potential opportunities to explore with partners for the reservoir to improve the flood risk in the area.</p> <p>We are designing the reservoir in line with the latest industry guidance and standards, and following the legislation set out in the Reservoirs Act 1975. This includes requirements for emergency planning – such as the ability to lower a reservoir's water level quickly ('drawdown') in the event of an emergency. Initial modelling has confirmed that discharge to the existing river network is a viable option for this, and this will mitigate the already low risk of flooding to the local community.</p> |
| <b>The selected site and alternative sites</b>  | <b>You made suggestions for alternative sites and questioned how we came to this proposed site.</b>  | <p>We completed a multi-stage site selection process that considered a wide range of factors, including geology, engineering requirements and impacts on the community.</p> <p>In total, we considered 114 potential sites around Lincolnshire and have identified the chosen site as the best performing. It is currently the only site we're considering.</p> <p>While site location was not a specific part of the phase one consultation, any suggestions for alternative sites in consultation feedback will be reviewed against the same criteria, and to see if we have considered them already.</p>   |
| <b>Need for a reservoir and project funding</b> | <b>You would like to know what steps we're taking to reduce leakage and supply water before a reservoir is built.</b>  | <p>We continue to lead the water sector in tackling leakage, exceeding our regulatory targets for over 10 years running. Work is already underway on a half-billion-pound investment in new pipes that will bring water from the wettest areas in the north of Lincolnshire to the drier areas in the south and east of our region.</p> <p>We're installing over one million smart meters in customer homes and are delivering a number of environmental programmes to protect our precious chalk streams and rivers.</p> <p>Even with reducing leakage, our assessments show there is still a need for a new reservoir to address the challenges of a changing climate and growing population.</p>   |
|   | <b>You want to know how the project will be funded.</b>  | <p>The reservoir would be funded by water company customer bills, with a third party provider likely to construct and operate it.</p> <p>This funding model has been used on other projects, including the Thames Tideway tunnel, and Ofwat, the water industry regulator, is keen that we explore similar options for the Lincolnshire reservoir.</p> <p>We'll provide more detail on this as the project develops.</p>  |



| Topic                        | What you said   | What we're doing  |
|------------------------------|---|---|
| <b>Design</b>                | <b>Understanding how the embankments will look in this unique, low-lying landscape is of significant importance to you.</b>   | <p>The embankments will be new features in the landscape. We are looking at ways to reduce their potential prominence and be considerate of the surrounding landscape character in our proposals, and are taking landscape, ecological and stakeholder feedback into account as we develop the design.</p> <p>Our approach could include altering the shape of the reservoir edge or making the slopes less uniform, by varying the profile and gradient at different points around the reservoir. At the moment, we anticipate the reservoir will have an average slope rate of around 1 in 10. This means it would gain a metre of height for every 10 metres of length on average, which is relatively gentle.</p> |
| <b>Transport and traffic</b> | <b>You expressed concerns around what would happen to the B1394.</b>  | <p>We understand the importance of this road in connecting Helpringham and Swaton. Our proposals do not currently involve removing this road as part of our construction plans.</p> <p>In the event that we need to use the land this road sits on, we would realign the road. If this is needed, it would happen before construction of the reservoir begins to make sure this connection between villages is maintained.</p>  |
|                              | <b>You would like to know whether connectivity between the surrounding communities including Scredington, Helpringham and Swaton will be affected by our proposals.</b> | <p>We recognise the importance of connectivity between the settlements that surround the site.</p> <p>We're at a very early stage of our proposals, and the finer details of the design will continue to evolve as we refine these plans based on further studies and consultation feedback.</p> <p>We would ensure road connections between settlements are not lost.</p>  |
|                              | <b>You want to know whether the rail line running between Sleaford and Spalding will be used to support public transport to the reservoir.</b>                          | <p>Making the reservoir accessible by public transport is important to us in terms of accessibility, and to reduce potential impacts on local roads.</p> <p>We're considering options for transport to the reservoir, including by train, bus, and other forms of transport.</p> <p>This is something that will involve work with outside operators and will be discussed in more detail at the next phases of consultation.</p>  |
|                              | <b>There are concerns around additional traffic on local roads, particularly from the A52.</b>  | <p>We do understand the concerns about increased volumes of traffic on local roads. We also recognise people want assurance that construction traffic will not cause damage or congestion.</p> <p>Our team will be developing plans to assess and manage any effects on roads as a result of the reservoir, which we'll provide at future phases of consultation.</p> <p>We'll also be working closely with North Kesteven District Council, South Kesteven District Council and Lincolnshire County Council to seek their input.</p>   |

| Topic                          | What you said   | What we're doing  |
|--------------------------------|---|---|
| <b>Community opportunities</b> | <b>You asked what benefits there will be for communities who will be most affected.</b>   | <p>Our vision for this project goes beyond just building a reservoir. We want to create a destination where water, people and nature come together.</p> <p>This means creating space for wildlife, alongside leisure opportunities such as cycling and walking routes, and water sport activities. It also means creating new jobs during construction and into the future, providing opportunities for businesses and tourism to thrive.</p> <p>Further information can be found on page four about your feedback on the features you'd like to see included in the reservoir.</p>   |
|                                | <b>Many of your comments stressed the importance of the reservoir being accessible from local towns and communities, including Sleaford, Scredington and Helpringham.</b> | <p>We believe the reservoir has the opportunity to be a valuable area for walking and other outdoor activities for the local area. This was reflected in your requests and feedback.</p> <p>As part of the reservoir design, our team will look at opportunities for creating connectivity between villages and the reservoir site, while considering the existing roads.</p> <p>Design plans will be part of the next phase of consultation in 2024.</p>   |
|                                | <b>In addition to access from local communities, it is clear you would like the reservoir to be accessible to those with disabilities.</b>                                | <p>It is important to us that everyone is able to experience the wider benefits of the reservoir.</p> <p>Safe access for all people, including those with disabilities, will be considered as part of the reservoir design.</p>   |
| <b>Environmental impacts</b>   | <b>You want to understand the potential impacts on the existing wildlife and habitats within the project area.</b>  | <p>Throughout the site selection process, we have been working with environmental organisations such as the Environment Agency and Natural England.</p> <p>High-level environmental assessments were also undertaken as part of the site selection process. You can read about these in the site selection report, available on our website <a href="#">here</a>.</p> <p>An Environmental Impact Assessment (EIA) will be a key part of how we develop plans for the reservoir, and it is central to the planning process we're following.</p> <p>Environmental surveys will begin in the coming months. The results will influence the project development and design proposals as we move towards the next phase of consultation.</p> <p>The findings of our EIA work will be consulted on as part of our Preliminary Environmental Information Report (PEIR) and presented in an Environmental Statement which will accompany our application for consent. The scope of these studies will be agreed with the Planning Inspectorate as part of the formal EIA Scoping process.</p> <p>Through these processes we will investigate the potential environmental impacts of the proposed project, together with how we plan to reduce or limit these impacts.</p> |

| Topic                        | What you said  | What we're doing  |
|------------------------------|--|---|
| <b>Environmental impacts</b> | <b>You asked how a biodiversity net gain will be achieved.</b>   | <p>We're committed to creating opportunities to support the environment, with a minimum target of achieving at least 10 per cent biodiversity net gain.</p> <p>Biodiversity net gain will be measured using the established Defra metric. Experienced ecologists will carry out these assessments and work with the team to develop our plans.</p> <p>The early concept design in the phase one consultation includes examples of the type of environmental opportunities we're considering. That includes space for wetlands, wildlife and new habitats.</p> <p>As we move into the next phase of project development, we'll consider opportunities for how design could reduce impacts and create opportunities.</p>  |
| <b>Carbon emissions</b>      | <b>Information and analysis on the carbon impacts of the project, including future carbon savings, are important to you.</b>                             | <p>In November 2020, water companies unveiled a ground-breaking plan to deliver an operationally net zero water supply for customers by 2030 in the world's first sector-wide commitment of its kind.</p> <p>As a purpose-led business, we recognise we have a huge opportunity – and responsibility – to contribute to the environmental and social wellbeing of the communities we serve. We're already on the road to net zero, and while there is a long way to go, we're fully committed.</p> <p>For the reservoir, we have conducted a provisional carbon assessment which is explained in our site selection report, available on our website. This includes both capital carbon (produced during construction) and operational carbon (produced when the reservoir is up and running).</p> <p>This assessment is based on our current plans and will be developed in the next phase of design. Opportunities to reduce our carbon footprint, including through the use of on-site renewable energy and sequester carbon, will be fully explored as our proposals develop.</p> |
| <b>Construction</b>          | <b>The timescales of the project are something you were keen to understand in greater detail, particularly the justification for the length of time.</b> | <p>We do understand that there is a long timeline before the reservoir opens. However, the new reservoir is a complex project and it's important that we develop plans carefully to take account of a whole range of factors.</p> <p>It will take at least three years to develop a design, consult and gather feedback, and complete all of the environmental assessments required.</p> <p>The planning approval process for Nationally Significant Infrastructure Projects – which the Lincolnshire reservoir is classed as – could also take up to three years. The longest part of our programme is construction of the reservoir. We estimate this to be eight to ten years.</p> <p>Our project timeline on page 8 provides more detail about timings.</p> <p>We're planning to have the reservoir in supply by the early 2040s. We'll continue to keep people up to date on timings as the project progresses.</p>  |

| Topic                                      | What you said  | What we're doing   |
|--|--|--|
| <b>Construction</b>                        | <b>You have concerns about the potential impacts of construction on the local area, including noise, dust and construction traffic.</b>  | <p>We do understand people have concerns about the construction phase and we'll look at ways of keeping impacts as low as we can. This could include, for example, working times, agreed vehicle routes, phasing of the construction programme, and other similar measures.</p> <p>One of the factors that makes the preferred site a good option is the underlying ground type of the area – which comprises of Oxford Clay. This is suitable for the construction of the reservoir embankments and means we won't need to ship large volumes of materials to and from the site. This helps with vehicle movements which, in turn, helps to limit the potential for noise and dust.</p> <p>Factors such as air quality, noise and vibration, and transport movement during the construction phases will be considered by our engineers in more detail as we develop a design for the reservoir.</p> |
| <b>Your experience of the consultation</b> | <b>You had questions about our use of images in the consultation materials.</b>  | <p>We understand there are questions about our use of images of Grafham and Rutland Water in our consultation materials.</p> <p>These images were used to show some of the wider benefits, such as cycle paths and walkways, that are popular at our existing reservoirs as design features we're planning to include in the Lincolnshire reservoir.</p> <p>We appreciate that people feel this isn't a fair representation of the Lincolnshire reservoir as an embanked reservoir.</p> <p>Thanks to your feedback, we will consider how pictures are represented in all our future materials.</p>   |
|  | <b>You wanted to know whether the information available at our consultation events was reflective of the current progress of the project, and whether we had any additional plans or information that were not shared during our consultation.</b> | <p>The consultation covers the full extent of the work to date.</p> <p>Our decision to consult on the project at this early stage was to make sure we could get your feedback from the outset and consider it in our plans.</p> <p>This meant we didn't have high levels of detail. However, we felt community involvement from the beginning was very important.</p>  |



# What happens next

Your feedback to the consultation has given us lots of valuable information which will be taken into account as we develop the project.




**Working on the design of the reservoir**

Over the course of the year, the team at Anglian Water will be working together to develop the design of the reservoir.


This will involve building on the early concept design to create more detail on the features that will be included in the reservoir, and how we propose to use the land in the pink and grey areas.

Embankment design and height will also be a key part of this work as we look to address the points you've raised about how the reservoir will look and feature in the local landscape.

**Surveys**

Throughout 2023, our environment team will be conducting wildlife and ecological surveys of the proposed site to help inform our environmental assessments of the project. We'll be working closely with landowners to agree access for surveys and also to answer ongoing questions about what our plans mean for properties and businesses.



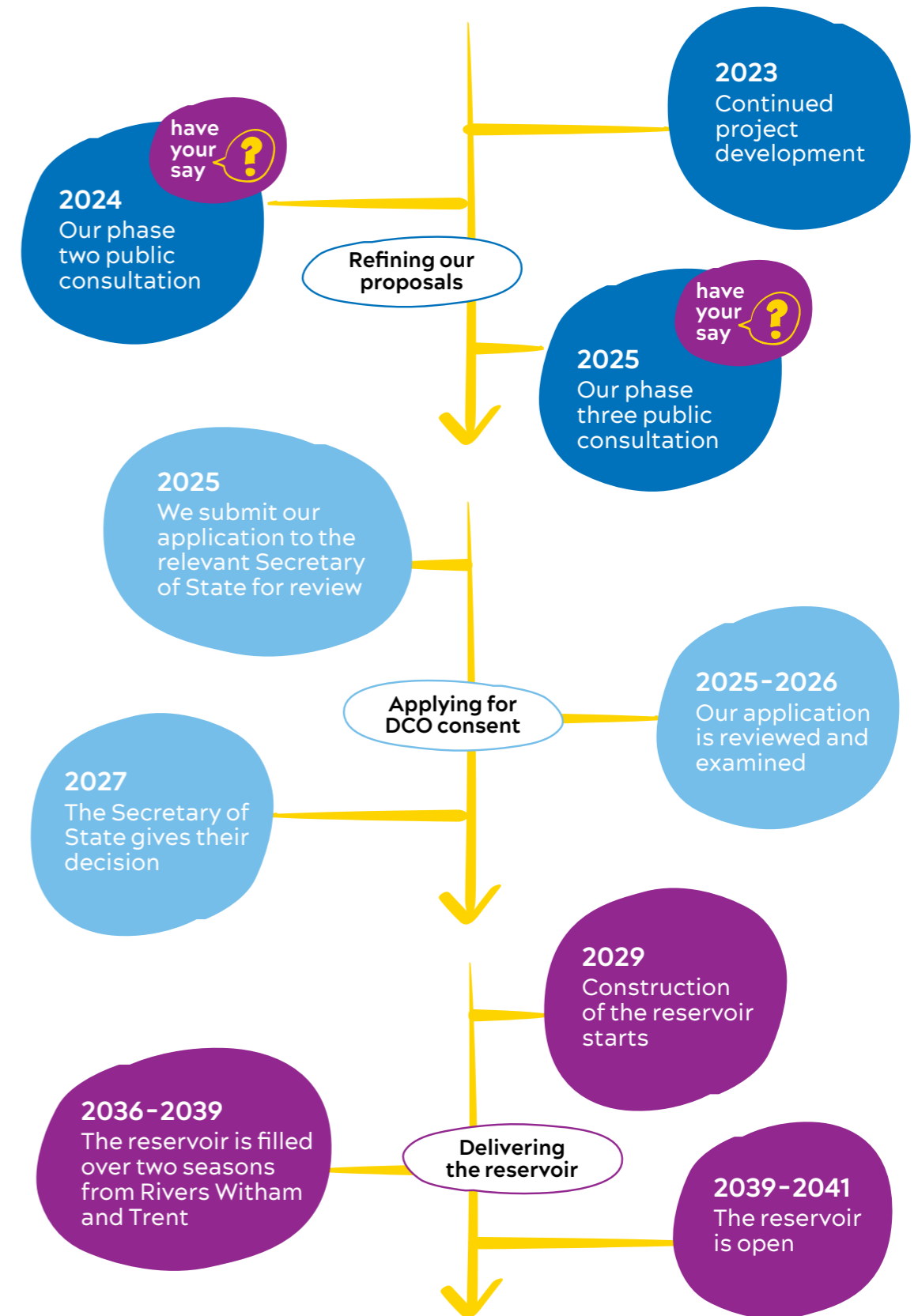
**Working with stakeholders**

We'll also continue to work closely with our stakeholders for the duration of the project.

This will involve regular updates on the project's progress, briefings and technical working groups.



## Timeline




Please note: this timeline is indicative only and may change as our proposals develop. As a result, it may differ slightly from previous timelines.

## How to get in touch

The close of our consultation doesn't mark the end of our communication with stakeholders and valued members of the community.


We encourage you to sign up for email updates to keep up to date with the latest project information. You can register for updates on our website.

Please get in touch with any questions.

 EMAIL US  
[info@lincsreservoir.co.uk](mailto:info@lincsreservoir.co.uk)

WRITE TO US   
Freepost  
Lincolnshire Reservoir

 CALL US  
0800 915 2491

VISIT OUR WEBSITE   
[www.lincsreservoir.co.uk](http://www.lincsreservoir.co.uk)

